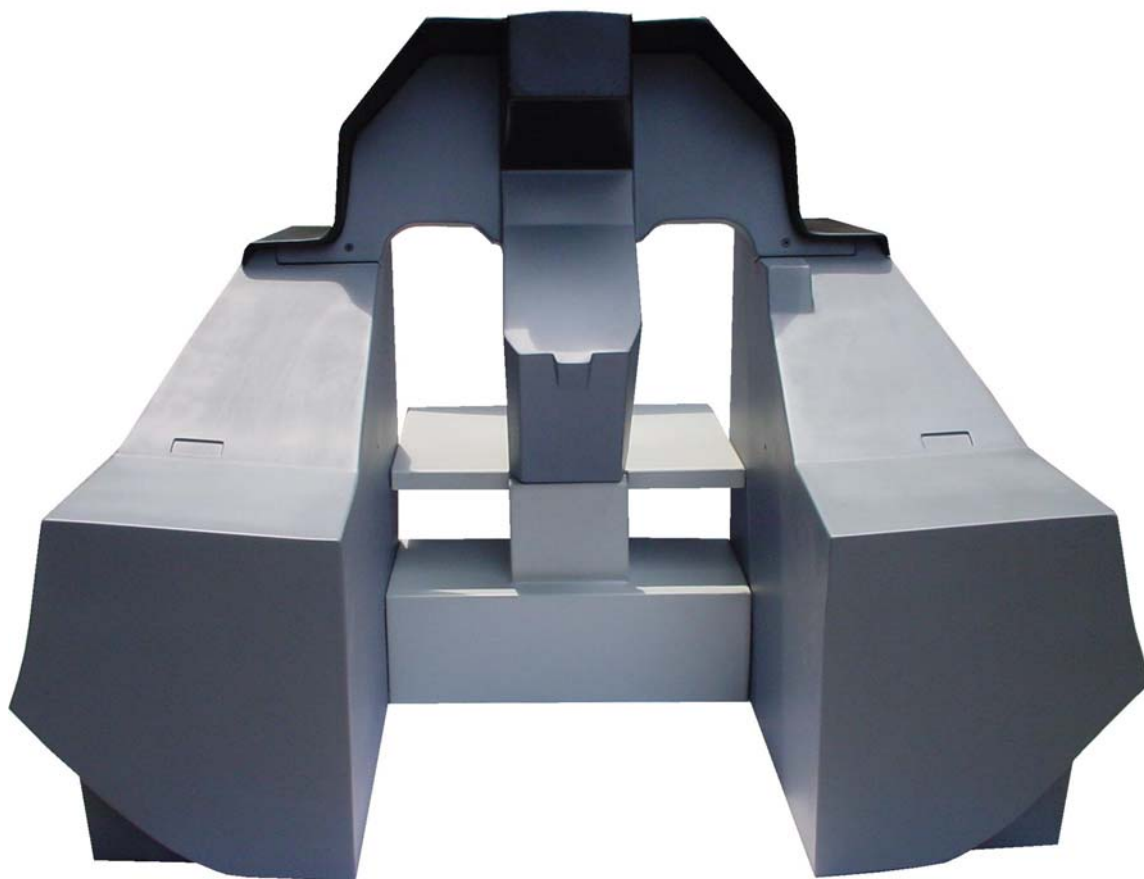


# **INSTALLATION MANUAL FOR THE AIMSWORTH VIPER II**



**AIMSWORTH  
VIPER II  
F-16 C**

**VERSION 1.0**

**10/03/2003**

All pictures and text are property of Aimsforth Corporation Co., Ltd., © 1999 - 2003  
Any unauthorized use of this material is prohibited without prior written authorization.

## **Document History**

The following table list's each version of this document, what changes were involved in each, and who requested and made the changes.

<b>Version</b>	<b>Date</b>	<b>Requested by</b>	<b>Completed by</b>	<b>Description of Changes</b>
1.0	10/03/2003			Initial Document

# CONTENTS

<b>1</b>	<b>WELCOME</b>	<b>1-1</b>
	HOW TO GET IN TOUCH WITH US	
<b>2</b>	<b>ASSEMBLY INSTRUCTIONS</b>	<b>2-1</b>
	SO LET'S GET YOUR VIPER II READY!	
<b>3</b>	<b>ADDITIONAL INFORMATION</b>	<b>3-1</b>
	YOU'RE DONE	

## WELCOME

HELLO SIMMER,

FIRSTLY WE WOULD LIKE TO THANK YOU FOR PLACING YOUR TRUST IN OUR PRODUCTS AND US.

WE CONTINUALLY WORK HARD TO CREATE THE BEST AND MOST AFFORDABLE SOLUTIONS IN REALISTIC COCKPIT ENVIRONMENTS FOR TODAY'S DEMANDING MILITARY SIMULATIONS. THIS IS AN ONGOING EFFORT THAT NEVER ENDS AND AS ALWAYS, WE WELCOME YOUR COMMENTS FOR IMPROVING FUTURE PRODUCTS.

WE HOPE YOU WILL ENJOY OUR PRODUCTS AND RECOMMEND US TO YOUR FLIGHT SIM BUDDIES

HAPPY HUNTING AND CHECK SIX.

JURGEN HEMMANN  
PRESIDENT AIMS WORTH CORPORATION

## HOW TO GET IN TOUCH WITH US

MAIL: AIMS WORTH CORPORATION CO., LTD., SUITE 704 S&B TOWER, 68-68/6 PUN ROAD, SILOM, BANGRAK, 10500 BANGKOK, THAILAND.

PHONE: + 662 637 7417 - 9

FAX: + 662 637 7420

E-MAIL: [SALES@AIMSWORTH.COM](mailto:SALES@AIMSWORTH.COM)

OFFICE HOURS ARE: MONDAY - SATURDAY, 09:00 - 17:30

TIME DIFFERENCE: WE ARE + 6/7 HOURS AHEAD OF GMT

FOR EXAMPLE: 09:00 TIME IS 03:00 IN LONDON  
09:00 TIME IS 22:00 IN NEW YORK

## ASSEMBLY INSTRUCTIONS

**BEFORE YOU GET STARTED: FIBERGLASS IS A MATERIAL THAT REACTS TO TEMPERATURE AND HUMIDITY. BEFORE SHIPMENT, EACH VIPER II IS TEST ASSEMBLED FOR CORRECT FITTING. HOWEVER, THE COMPONENTS MAY GET SLIGHTLY OUT OF SHAPE DURING TRANSPORT. THIS IS A CHARACTERISTIC OF FIBERGLASS WHICH CANNOT BE AVOIDED WITH SUCH LARGE PIECES. GENTLE PRESSURE APPLIED IN THE RIGHT LOCATION WILL HELP. ALSO, BE AWARE THAT FINAL CURING CAN OF THE MATERIALS MAY TAKE AS LONG AS 3-4 MONTHS. THE PIECES WILL SETTLE IN THE ASSEMBLED POSITION WITHIN A FEW DAYS. MORE INFORMATION ON THIS IS COVERED IN CHAPTER 3.**

**SO LET'S GET YOUR VIPER II READY!**

---

### STEP 1: GETTING STARTED

**CLEAR THE WORK AREA, OR THE PLACE WHERE THE PIT WILL BE LOCATED FROM ALL UNNECESSARY ITEMS, SUCH AS ELECTRICAL CABLING, ETC. ITS ALWAYS A GOOD IDEA TO COVER THE FLOOR WITH SOME OLD CARPET OR CARDBOARD TO AVOID SCRATCHES.**

---

### STEP 2: UNPACKING

**UNPACK ALL PARTS CAREFULLY FORM THE BOX. PLEASE DISPOSE OFF OR RECYCLE ALL PACKAGING MATERIAL PROPERLY.**

---

### STEP 3: ASSEMBLE THE TWO SIDE CONSOLES

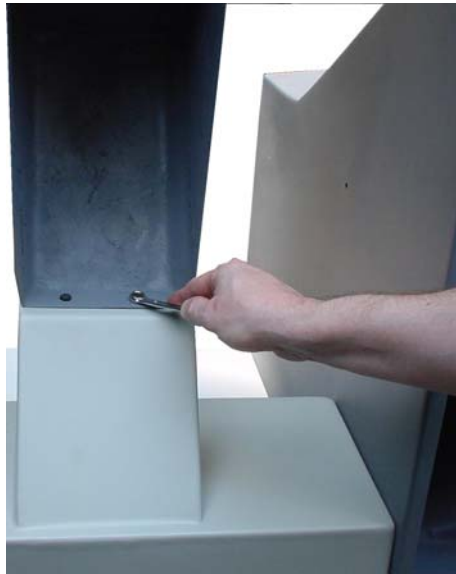
**TAKE THE RIGHT SIDE CONSOLE A JOIN WITH THE LIGHT GREY CENTER BOX AS SHOWN WITH THE PICTURE BELOW. REPEAT THIS WITH THE OTHER SIDE.**



**STEP 4: ATTACH THE CENTER PANEL TO THE ASSEMBLY**

**NOW WOULD BE A GOOD TIME TO INSTALL FOR EXAMPLE THE ICP/MFD OR OTHER COMPONENTS INTO THE CENTER PANEL !**

INSERT THE CENTER PANEL IN THE TOP SLOTS ON BOTH SIDE CONSOLES. YOU WILL FIRSTLY ATTACH THE CENTER PANEL WITH THE TWO SCREWS ON BOTTOM.



---

**STEP 5: ATTACHING THE CENTER PANEL ON TOP**

FIX THE LEFT AND RIGHT SIDE OF THE TOP OF THE CENTER PANELS WITH THE SCREWS PROVIDED ON TOP OF THE SIDE CONSOLES.

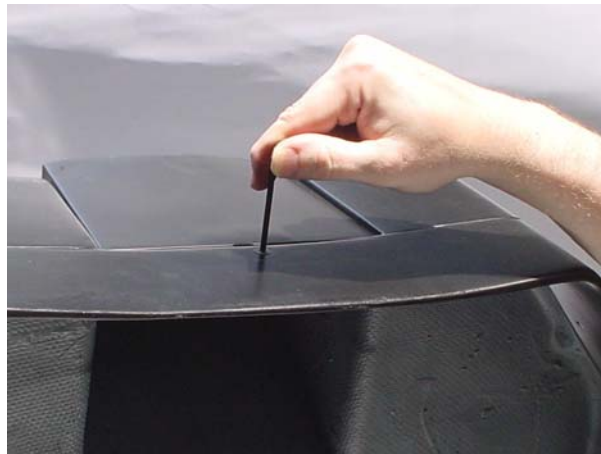


**STEP 6: ATTACH THE FLOORING FOR THE RUDDER PEDAL**  
ATTACH THE FLOOR AS SHOWN BELOW TO THE WHOLE ASSEMBLY.



---

**STEP 7: THE GLARE SHIELD**  
ATTACH THE GLARE SHIELD WITH THE SCREWS IN SEQUENCE AS SHOWN BELOW. START WITH THE TOP SCREW FIRST!



THEN THE LOWER SIDE SCREWS



LASTLY IS THE SCREW IN THE MIDDLE OF THE GLARE SHIELD

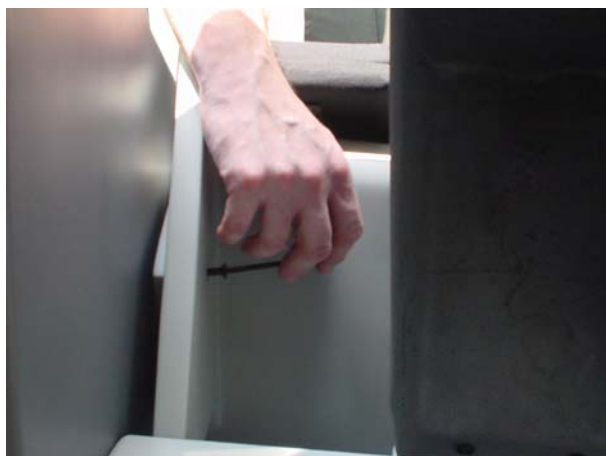


---

## STEP 8: THE ACES II EJECTION SEAT INSTALLATION

**PLEASE NOTE THAT THE ACES II IS OPTIONAL AND IS NOT INCLUDED IN THE STANDARD VIPER II KIT!**

ASSEMBLY THE SEAT AS AND MOVE IT INTO THE RIGHT POSITION, THE SIMPLY FIX THE SEAT WITH THE TWO LONG SCREWS THAT CAME WITH YOU KIT.



---

THIS IS IT! YOU ARE DONE AND READY FOR THE HUNT 😊 CONNECT EVERYTHING TO YOUR COMPUTER AND TAKE OFF. YOU WILL AGREE WITH US, THAT ONCE YOU FLY YOUR FAVORITE BIRD FROM A REAL PIT, NOTHING ELSE COMPARES.

THE AIMSWORTH TEAM WISHES YOU MANY HAPPY HOURS AND HOPE TO HEAR FROM YOU WITH WORDS AND PICTURES OF YOUR SETUP.

CHECK SIX

THE AIMSWORTH TEAM

## ADDITIONAL INFORMATION'S:

*TOOLS AND SCREWS NEEDED:* A BASIC SET OF TOOLS AND ALL SCREWS ARE INCLUDED IN THE KIT. IF YOU DO NOT PLAN TO MODIFY OR FIDDLE AROUND WITH THE PIT, THEN DON'T PAY FOR ADDITIONAL TOOLS.

*MATERIALS USED:* WE USE ONLY HIGH GRADE INDUSTRIAL FIBERGLASS MATS AND RESINS THAT ARE ESPECIALLY WOVEN FOR US. BUT IF YOU ARE MAKING SOME CHANGES, DON'T WORRY MOST GOOD MATS AND RESINS ARE COMPATIBLE WITH OUR MATERIALS.

*CUTTING FIBERGLASS:* A JIG / DREMEL SAW WILL DO JUST FINE. USE A FINE BLADE IN ANY CASE AND WEAR PROTECTIVE GOOGLES AND A MASK. THE FINE SAW DUST CONTAINS FINE GLASS PARTICLES AS THE NAME IMPLIES.

*GLUING:* MOST GLUE UNFORTUNATELY DO NOT WORK WITH FIBERGLASS. YOU WILL HAVE TO USE RESIN AND HARDENER.

*PAINTING:* I HAVE A SCRATCH WHAT CAN I DO? NO PROBLEM. SANDPAPER (1000 WET) THE AREA CLEAN AND APPLY A FINE COAT OF ACRYLIC MATT LACQUER. WANT TO CHANGE THE COLOR OF YOUR VIPER II? SIMPLY USE THE WET SANDPAPER TO ROUGHEN UP THE SURFACE A LITTLE BIT AND YOU ARE READY TO PAINT. USE ANY GOOD ACRYLIC PAINT.

*DRILLING:* USE A FINE DRILL FIRST AND WORK YOUR WAY UP **SLOWLY!** FIBERGLASS CAN EASILY BREAK.

*GENERAL PRECAUTIONS:* AS WITH ALL TOOLS AND CHEMICALS, WEAR PROTECTIVE GEAR AND WORK IN A WELL VENTILATED ROOM. IF YOU ARE NOT SURE IF YOU DOING SOMETHING RIGHT, ASK AN EXPERT.



Copyright © 1999 – 2003 Aimsworth Corporation Co., Ltd.  
All rights reserved. All other brand or product names are trademarks of their  
respective companies and organizations  
[www.aimsworth.com](http://www.aimsworth.com)